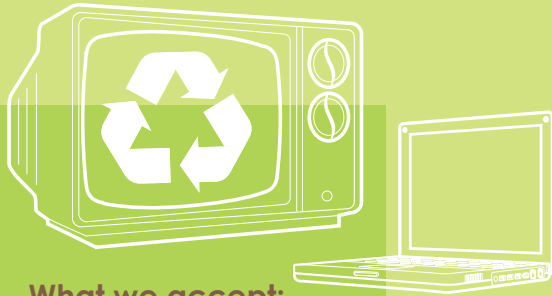


# free e-waste recycling events



To make it more convenient for residents and businesses to dispose of their waste properly, the Sonoma County Waste Management Agency is conducting free electronics collection events.

## 2009-10 e-waste schedule

**September 12 & 13, 2009** (Sat. & Sun.) • 8:30-4:30  
**September City Corporation Yard**  
(in the parking lot) 714 Johnson St.

**October 10 & 11, 2009** (Sat. & Sun.) • 8:30-4:30  
**Petaluma Sonoma-Marin Fairgrounds**  
(in the parking lot) 175 Fairgrounds Dr.

**November 7 & 8, 2009** (Sat. & Sun.) • 8:30-4:30  
**Sonoma Friedman's Home Improvement**  
(in the parking lot) 1360 Broadway Ave.

**December 5 & 6, 2009** (Sat. & Sun.) • 8:30-4:30  
**Windsor North Windsor Park & Ride**  
Old Redwood Hwy. north of Arata Ln.

**January 9 & 10, 2010** (Sat. & Sun.) • 8:30-4:30  
**Santa Rosa Wells Fargo Center for the Arts**  
(in the parking lot) 50 Mark West Springs Rd.

**February 27 & 28, 2010** (Sat. & Sun.) • 8:30-4:30  
**Healdsburg Southern Healdsburg Park & Ride**  
Healdsburg Ave. at Grant Ave. (northeast of Hwy. 101)

**March 13 & 14, 2010** (Sat. & Sun.) • 8:30-4:30  
**Cloverdale Cloverdale Train Depot**  
501 Asti Rd.

### What we accept:

**Computer equipment** (computers & monitors, laptops, keyboards, printers, mice, hard drives, tape & zip drives etc.)

**Consumer electronics** (DVD players, VCRs, gaming devices, stereo components, radios, PDAs, cell phones, cables, etc.)

**Televisions** (CRTs/LCDs)

**Office equipment** (telephones, fax machines, shredders, etc.)

**Kitchen & household appliances** (microwaves, stereos, radios, etc.)

**Please remove batteries from devices.**

### We will not accept:

**Large appliances** (refrigerators, freezers, ovens, stoves, dishwashers, air conditioners, water heaters, etc.)

## Business donations in large quantities welcome!

Questions Sonoma County Eco-Desk 565.3375 [www.RecycleNow.org](http://www.RecycleNow.org)

Sponsor:



A complete list of recycling options for electronic devices can be found in the Sonoma County Recycling Guide printed in the AT&T Yellow Pages phone book under Recycling or visit [www.recyclenow.org](http://www.recyclenow.org)