

# TOXICS DISPOSAL

## FOR RESIDENTS: THREE SERVICE OPTIONS

### Household Toxics Facility

Located at the Central Disposal Site, the Household Toxics Facility is open every week for **free drop-off** of toxics from Sonoma County residents. Bring your ID to prove residency.

1

**Appointment:** Not required

**Hours:** **Thursday, Friday & Saturday**  
**7:30 am–2:30 pm** *Please note that the Household Toxics Facility will be closed from Dec. 19, 2016 through Jan. 2, 2017.*

**Location:** **Central Disposal Site (Bldg. 5)**  
**500 Mecham Rd., Petaluma**



**Transportation & packing:** State transportation laws limit each vehicle to a maximum of 15 gallons of liquid (with a maximum of 5 gallons per container) or 125 pounds of solid material • Never mix chemicals • Place in sealed containers in the trunk, packed to prevent spills • Syringes/needles must be in a sealed and labeled *approved* container. (For details, see *Safe syringes/needles disposal pg. 29.*) **Not accepted:** Explosives or ammunition • Radioactive materials • Biological wastes (except syringes) • Electronics • Controlled substances

### How to get there

**Directions:**

Take Hwy. 101 to the Cotati off-ramp

Take Hwy. 116 west toward Sebastopol

Left on Stony Point Rd. S.

Right on Mecham Rd., Central Disposal Site is located on the right.



**No illegal dumping at the Household Toxics Facility.**

Unlawful dumping or depositing of hazardous waste is prohibited by law, California Penal Code Section, 374.8 (B), punishable by imprisonment or fines up to \$10,000.

### Community Toxics Collections *By appointment only*

Every week there is a toxics collection somewhere in Sonoma County. Bring your ID to prove residency.

2

**Appointment required:** Call **795-2025 option 3** or toll-free **1-877-747-1870** or e-mail [toxicsdisposal@cleanharbors.com](mailto:toxicsdisposal@cleanharbors.com)

**Hours:** **Tuesdays 4-8 pm**

**Transportation & packing:** State transportation laws limit each vehicle to a maximum of 15 gallons of liquid (with a maximum of 5 gallons per container) or 125 pounds of solid material • Never mix chemicals • Place in sealed containers in the trunk, packed to prevent spills • Syringes/needles must be in a sealed and labeled *approved* container (For details, see *Safe syringes/needles disposal pg. 29.*)

**Not accepted:** Explosives or ammunition • Radioactive materials • Electronics • Biological wastes (except syringes) • Controlled substances.

2016 Community Toxics Collections Schedule	June 2016	September 2016
April 2016	7 Bodega Bay	6 Oakmont
5 Windsor	14 Santa Rosa, NW	13 Santa Rosa, NW
12 Sonoma	21 Petaluma	20 Healdsburg
19 Cloverdale	28 Kenwood	27 Sonoma
26 Santa Rosa, SE	July 2016	October 2016
May 2016	5 Cloverdale	4 Cloverdale
3 Guerneville	12 Santa Rosa, NE	11 Larkfield
10 Oakmont	19 Sonoma	18 Petaluma
17 Healdsburg	26 Rohnert Park	25 Santa Rosa, SE
24 Boyes Hot Springs	August 2016	November 2016
31 Larkfield	2 Windsor	1 Guerneville
	9 Sebastopol	8 Windsor
	16 Forestville	15 Oakmont
	23 Glen Ellen	29 Santa Rosa, NE
	30 Cotati	December 2016
		6 Sebastopol
		13 Kenwood

**Locations of Community Toxics Collections will be provided when you schedule your appointment. Call or e-mail at least 24 hours prior to the collection event.**

### 2017 Community Toxics Collections Schedule

January 2017	March 2017
10 Santa Rosa, NW	7 Petaluma
17 Sonoma	14 Larkfield
24 Cloverdale	21 Sebastopol
31 Healdsburg	28 Santa Rosa, NW
February 2017	April 2017
7 Rohnert Park	4 Windsor
14 Monte Rio	11 Sonoma
21 Oakmont	18 Cloverdale
28 Rincon Valley	25 Santa Rosa, SE

### Toxic Rover Pickup Service *By appointment only*

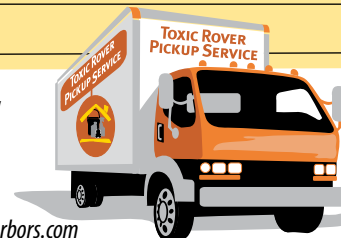
Have your toxics picked up at your home. Services are provided on a first-come-first-served basis. Each Wednesday the Toxic Rover serves a different region of Sonoma County. Allow several weeks' advance notice.

3

**Fee:** \$50/pickup (limit 440 pounds). Limited free pickup available for seniors over 80 years of age and housebound residents.

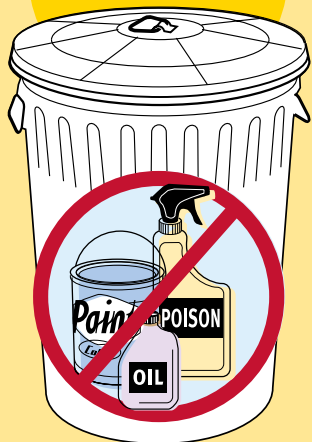
**Appointment required:** Call **795-2025 option 4** or toll-free **1-877-747-1870** or e-mail [toxicsdisposal@cleanharbors.com](mailto:toxicsdisposal@cleanharbors.com) When you call or e-mail, please describe the types and amounts of the household hazardous waste you want picked up. You will be required to submit a written pickup request by e-mail, fax or mail.

**Hours:** **Wednesdays**, limited appointments available.



## COMMON EXAMPLES OF TOXICS

Don't put  
toxics in the  
garbage.



### Toxics at home

Many common household products are legally defined as hazardous. These materials can pose a threat to human health, animals and the environment when improperly used or disposed. Hazardous wastes are any unwanted product labeled: toxic, poison, combustible, corrosive, flammable or irritant. The Agency's Household Hazardous Waste program for Sonoma County residents and qualified businesses provides proper disposal for hazardous products when they are no longer wanted.



**In the yard:** Fungicides • Insecticides • Pesticides • Pool chemicals  
• Propane cylinders, 5 gallons and smaller • Weed killers

**In the house:** Aerosol sprays • Asbestos • Batteries • Cleaners  
• Cosmetics • Fire extinguishers • Fluorescent lamps • Medications  
• Nail polish & remover • Syringes/needles • Toiletries

**In the garage:** Antifreeze • Auto batteries • Automatic transmission  
fluid • Brake fluid • Engine cleaners • Flares • Fuel such as butane, diesel,  
gasoline, kerosene & lamp oil • Oil & filters • Power-steering fluid

**In the workshop:** Flammable liquids & solids • Glues • Paint • Paint  
thinners • Photo chemicals • Solvents • Wood finishes

**Not accepted:** Explosives or ammunition • Radioactive materials • Biological wastes (except syringes)  
• Electronics (for recycling options for electronic devices, see *Electronic e-waste pg. 20*) • Controlled substances

## BUSINESS HAZARDOUS WASTE By appointment only

Services are available for businesses that qualify as Conditionally Exempt Small Quantity Generators as per regulations (CCR Title 22 §66260.10), which are businesses that generate 100 kilograms (27 gallons liquid or 220 pounds solid) or less of hazardous waste per month.

### Household Toxics Facility

Located at the Central Disposal Site, the Household Toxics Facility is open for drop-off of hazardous waste from qualified Sonoma County businesses.

**Appointment required:** Call **795-2025 option 2** or toll-free **1-877-747-1870**  
or e-mail [toxicsdisposal@cleanharbors.com](mailto:toxicsdisposal@cleanharbors.com)

**Forms & fees:** Paperwork required. Download forms at [www.recyclenow.org](http://www.recyclenow.org)  
\$25 processing fee plus disposal fees based on type and quantity of waste.

**Hours:** **Tuesdays & Wednesdays 7:30 am–2:30 pm**  
*Please note that the Household Toxics Facility will be closed from Dec. 19, 2016 through Jan. 2, 2017.*

**Location:** **Central Disposal Site (Bldg. 5)** at 500 Meham Rd., Petaluma

### Community Toxics Collections

Every week there is a toxics collection somewhere in Sonoma County. Space may be limited for business appointments and is based on availability.

**Appointment required:** Call **795-2025 option 2** or toll-free **1-877-747-1870**  
or e-mail [toxicsdisposal@cleanharbors.com](mailto:toxicsdisposal@cleanharbors.com)

**Forms & fees:** Paperwork required. Download forms at [www.recyclenow.org](http://www.recyclenow.org)  
\$25 processing fee plus disposal fees based on type and quantity of waste.

**Hours:** **Tuesdays 4-8 pm** For Community Toxics Collections schedule, see pg. 2.

### Common questions and answers

**Q. What is the process?**

- A.** 1. Download Business Hazardous Waste Disposal Forms from [www.recyclenow.org](http://www.recyclenow.org)  
2. Obtain an EPA Waste ID number (if needed).  
3. Submit paperwork by fax or e-mail to receive an appointment and pricing information.



**Q. Will this program meet the disposal requirements of regulating agencies?**

- A.** You will receive a receipt of disposal for your records that will satisfy regulatory disposal requirements. Receipts and all records should be kept for a minimum of three years.

**Q. If my business generates more than 100 kilograms of one type of waste, but I have only 1 gallon of something else that my regular hauler won't accept, can I bring it to this program?**

- A.** You must generate less than 100 kilograms of all hazardous wastes to qualify to use this program.

**Q. Does using this program mean my business will be inspected for hazardous waste?**

- A.** The Sonoma County Waste Management Agency is not a regulatory agency.

**Q. Who are the regulatory agencies for my business?**

- A.** Contact the Certified Unified Program Agency (CUPA) for your area:  
Healdsburg 431-3360 Santa Rosa 543-3500  
Petaluma 778-4389 All other areas 565-1152